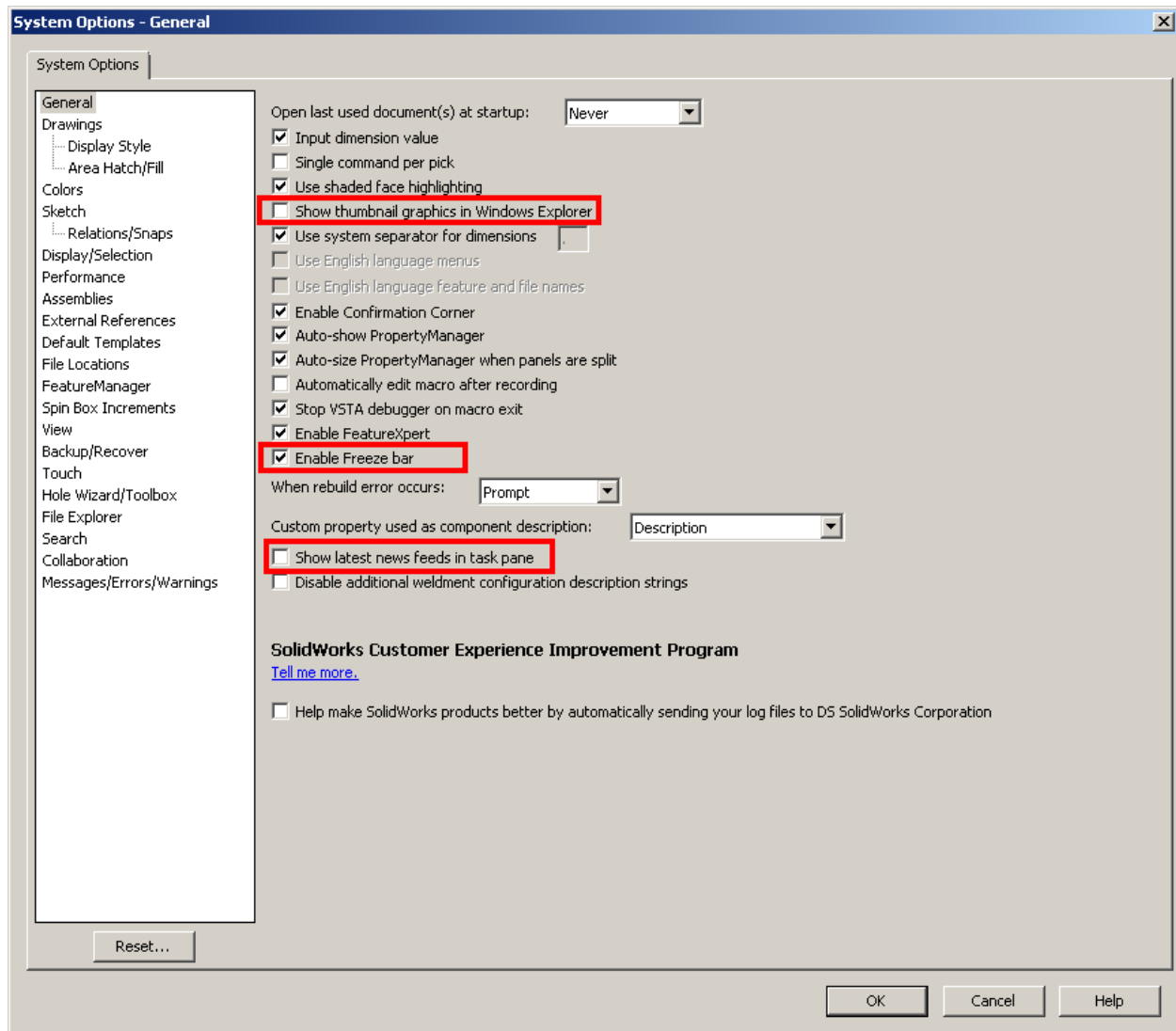


SW2012 Optimal System Options



Make sure that **When rebuild error occurs** it is set for **Prompt**.

System Options - Drawings

System Options

General
Drawings
Display Style
Area Hatch/Fill
Colors
Sketch
Relations/Snaps
Display/Selection
Performance
Assemblies
External References
Default Templates
File Locations
FeatureManager
Spin Box Increments
View
Backup/Recover
Touch
Hole Wizard/Toolbox
File Explorer
Search
Collaboration
Messages/Errors/Warnings

☒ Eliminate duplicate model dimensions on insert
☒ Eliminate duplicate model notes on insert
☒ Mark all part/assembly dimension for import into drawings by default
☒ Automatically scale new drawing views
☐ Show contents while dragging drawing view
☐ Display new detail circles as circles
☐ Select hidden entities
☐ Allow auto-update when opening drawings
☐ Disable note/dimension inference
☒ Disable note merging when dragging
☒ Print out-of-sync water mark
☐ Show reference geometry names in drawings
☐ Automatically hide components on view creation
☐ Display sketch arc centerpoints
☐ Display sketch entity points
☐ Display sketch hatch behind geometry
☐ Display sketch pictures on sheet behind geometry
☒ Print breaklines in broken view
☒ Save tessellated data for drawings with shaded and draft quality views
☒ Automatically populate View Palette with views
☐ Show sheet format dialog on add new sheet
☐ Reduce spacing when dimensions are deleted or edited (add or change tolerance, text etc...)
☐ Reuse view letters from deleted auxiliary, detail, and section views
☐ Override quantity column name in Bill Of Materials

Name to use:

Detail view scaling: X

Custom property used as Revision:

Keyboard movement increment:

Reset...

OK Cancel Help

